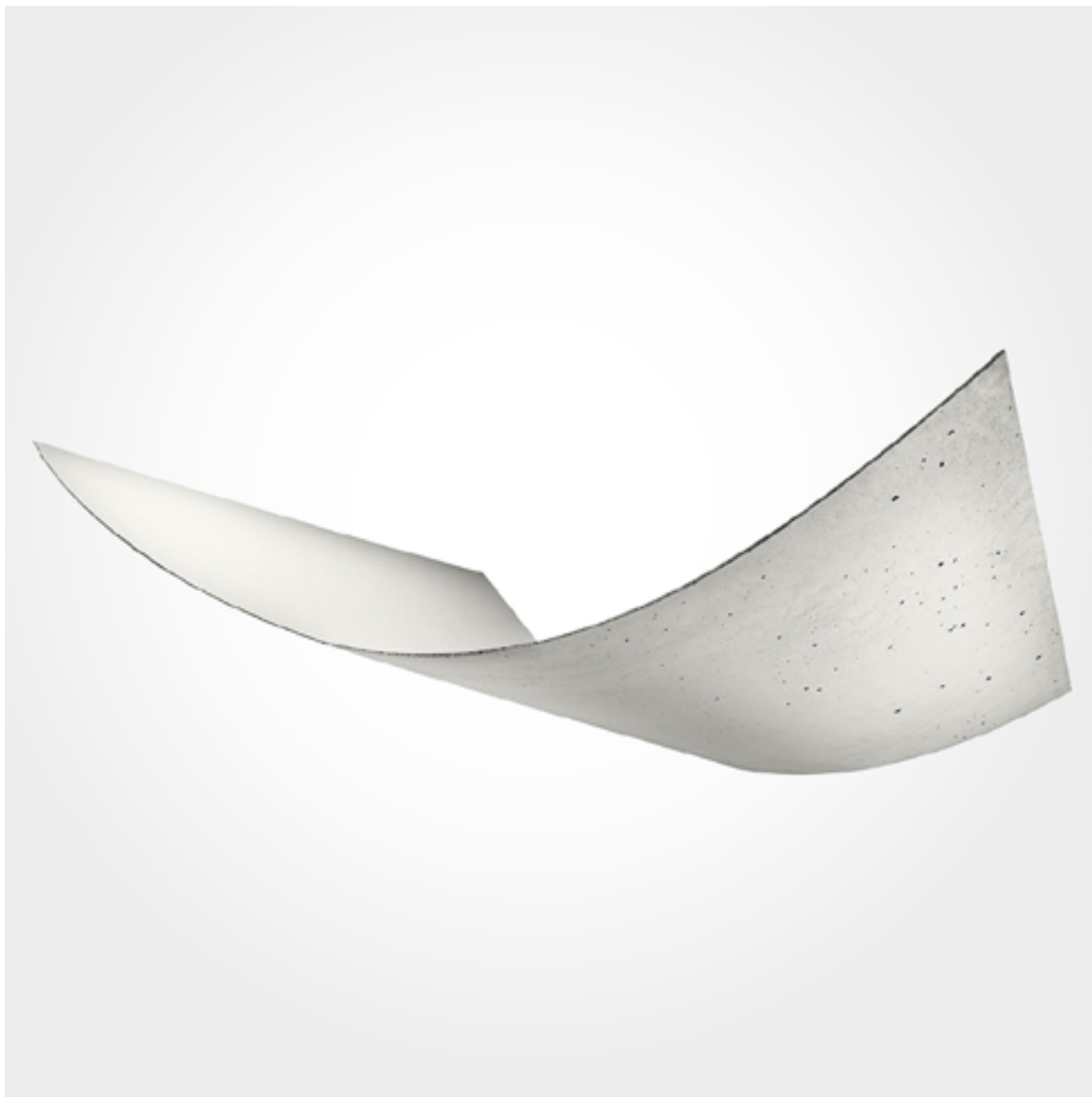


CIMENTO®



Rev.04/09/25

CIMENTO® WILL

Product data sheet

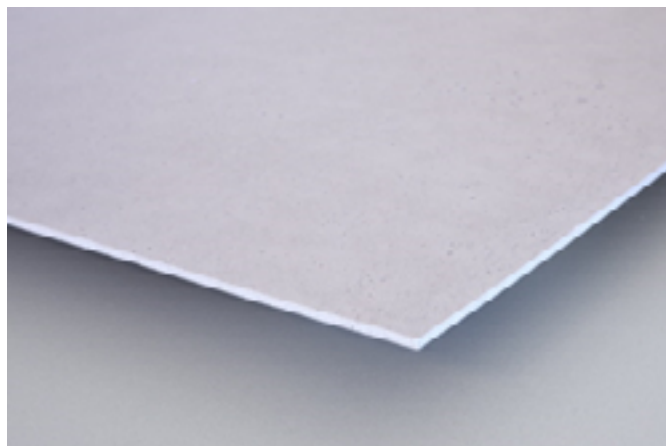
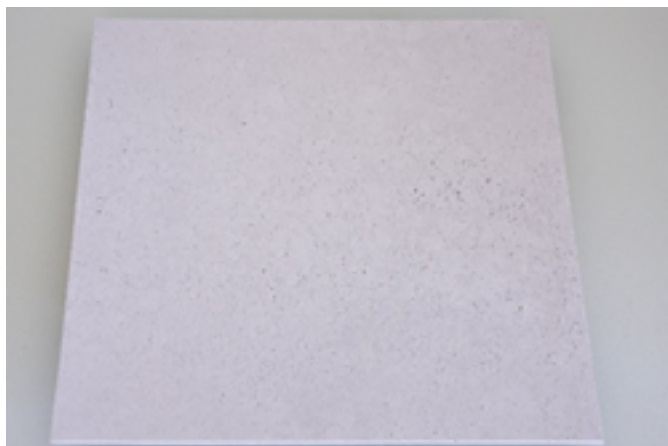
**EPD**
INTERNATIONAL EPD SYSTEM

www.cimento.tech

SAI Industry srl a socio unico - Via J.F. Kennedy, 107/a - 30027 San Donà Di Piave (VE) - ITALY - T: +39 0421 65422 - F: +39 0421 308084 - info@saiindustry.org C.F e P.IVA IT 04029080274 - R.E.A. VE 359123 - C.C.I.A.A. di Venezia - Iscrizione Registro Imprese VE 04029080274 - C.S. €10.000,00 i.v.

Description

CIMENTO® WILL is a product from the **CIMENTO®** range designed to allow the cladding of pre-existing structures, both flat and curved. The slabs are composed of a cement agglomerate to which a fiberglass is joined. **CIMENTO® WILL** is a non-combustible product.



Top and lateral view **CIMENTO® WILL**

Destination of use

CIMENTO® WILL is to be considered as a piece of furniture and cladding without any structural function. **CIMENTO® WILL** is the ideal solution for covering walls, ceilings and furniture. For more information, consult the installation and maintenance manual or contact the **CIMENTO®** sales office (www.cimento.tech).

Characteristics of CIMENTO® WILL

CIMENTO® WILL is available in a standard size or, upon customer request, can be supplied cut to size, according to the project specifications.

Dimensions	Weight	Thickness
3000x1200 mm	19,8 kg	3 ^{+/-0,5} mm
3600x1200 mm	24 kg	3 ^{+/-0,5} mm
custom	5,5 kg/mq	3 ^{+/-0,5} mm

Finishes and available

CIMENTO® WILL is available in a wide range of finishes and standard colours obtained with the use of natural pigments, thanks to which a high colour stability is achieved.

The standard colours and finishes can be consulted in the SURFACES catalogue, which can be downloaded on www.cimento.tech

Additional colours are available on request. Contact the **CIMENTO®** sales department.

Notes

The installation must be carried out by personnel specialized in the laying of coverings, anchoring **CIMENTO® WILL** to the underlying structure with the use of specific adhesives, following the instructions specifically indicated in the respective technical sheets.

For detailed information on installation, design and maintenance, please refer to the appropriate manuals. Whenever needed contact the **CIMENTO®** sales office.

CIMENTO® WILL can be easily worked with generic tools. It is recommended to use blades, discs, abrasives, etc., in suitable material (e.g. diamond blades).

www.cimento.tech

SAI Industry srl a socio unico - Via J.F. Kennedy, 107/a - 30027 San Donà Di Piave (VE) - ITALY - T: +39 0421 65422 - F: +39 0421 308084 - info@saiindustry.org C.F e P.IVA IT 04029080274 - R.E.A. VE 359123 - C.C.I.A.A. di Venezia - Iscrizione Registro Imprese VE 04029080274 - C.S. €10.000,00 i.v.

Cleaning and Maintenance

Do not use chemicals, abrasive cleaners, solvents, and polishing products. The **CIMENTO®** surface is treated with a protective system that prevents the penetration of dirt, be it dry, wet, or greasy, and facilitates cleaning operations.

The characteristic coexistence of smooth and porous parts requires some simple precautions during ordinary cleaning. It is important to prevent dirt and deposits from being moved and accumulating in the porous portions, especially in the case of moist or greasy substances.

For ordinary maintenance the following operations are recommended, to be carried out in the following order:

1. Preliminarily remove all dry deposits with a vacuum cleaner or a soft-bristled brush, removing dust and solid residues from both smooth and porous areas of the surface.
2. Rub the surface with a microfibre cloth dampened with a solution of water and neutral detergent, then dry, if necessary, with an additional clean and dry microfibre cloth to avoid leaving marks.

If the surface comes into contact with staining substances, act promptly on the affected area with a cloth moistened with ammonia solutions or similar products (avoiding degreasers that require abundant rinsing) then dry with a clean, dry cloth. Do not use aggressive acid-based, solvent-based, or abrasive agents.

Any variations with respect to the sample are not to be considered defects but as a characteristic of the product. Therefore, Sai Industry srl does not assume any responsibility in case of variations; they are not to be considered defects and are not covered by warranty, in particular for products purchased at different times.

Storage

Protect edges and corners from knocks with dedicated protections to avoid possible chipping. Protect **CIMENTO® WILL** from contact with staining substances, blades and sharp or scratching objects that could damage the finish.

Store the sheets on a flat, levelled, and dry surface, ensuring homogeneous support over the entire surface. It is possible to stack packages of the same size.

Do not overlap the packaging with other materials that may damage the packaging or the sheets.

Certifications

TECHNICAL FEATURES	REGULATION	EVALUATED PARAMETER		OUTPUT
Fire Reaction Class	UNI EN ISO 13501-1:2019	Fire Reaction Class		A2 - s1, d0
Surface resistance to chemical agents	UNI EN 13442:2013	Visual evaluation of surface anomalies after contact:	Water, detergent, red wine, coffee, tea, ammonia	No defect
			Acetone, ethanol, milk	Slight halo or barely visible mark
			Red wine vinegar	Slight sign visible from multiple directions
			Olive oil, black ink.	visible sign
Surface resistance to cold liquid	UNI EN 12720:2009	Visual evaluation of surface anomalies after contact 16/24h:	Ammonia, citric acid, detergent, distilled water, basic sweat	No evident signs
			Acetic acid, acetone, coffee, ethanol	Slight change visible only in reflected light
			paraffin oil	Slight surface degradation
		Resistance rate accordingly to Cen/ts16209		C
Surface resistance to scratching	UNI EN 15186:2012	Resistance rate accordingly to Cen/ts16209		D
Flexibility	Inside test	Minimum bend radius (concave)		100 mm
		Minimum bend radius (convex)		100 mm
Fire Reaction Class	ANSI/UL723	Fire Reaction	CFS	16.10
			FSI	15
			CSD	43.0
			SDI	45

CONTACTS

HEADQUARTER/SHOWROOM

Via J.F. Kennedy, 107/a - 30027
San Donà di Piave - VE - IT
Tel. +39 0421 65422

SHOWROOMS

IT

Via Borgogna, 7 - 20122
Milano - IT
showroom@cimento.tech
Tel. +39 02 82772692

info@cimento.tech



www.cimento.tech

Tutte le informazioni contenute in questa brochure sono soggette a cambiamenti. Tutti i diritti sono riservati. Nessuna parte di questa brochure può essere riprodotta senza il nostro permesso scritto.

All the information on this brochure are subject to changes. All rights reserved. Reproduction in whole or in part of the contents of this brochure is prohibited without our written consent.

Rev. 04set2025

©CIMENTO®



www.cimento.tech

SAI Industry srl a socio unico - Via J.F. Kennedy, 107/a - 30027 San Donà Di Piave (VE) - ITALY - T: +39 0421 65422 - F: +39 0421 308084 - info@saiindustry.org C.F e P.IVA IT 04029080274 - R.E.A. VE 359123 - C.C.I.A.A. di Venezia - Iscrizione Registro Imprese VE 04029080274 - C.S. € 10.000,00 i.v.